

i-Vertex IT Monitoring

DATA SHEET

- MSP ready: multitenancy and granular RBAC
- Distributed Monitoring with Smart Pollers
- High scalability (tens thousands devices, hundreds thousands monitors)
- Online Plugin Store
- Ready to use preconfigured templates
- Customizable interactive dashboards
- Autodiscovery for Network, VMware, Services and Devices
- Interactive dynamic maps
- Synthetic User Monitoring
- Application Monitoring
- Performance Monitoring
- Multichannel alerting
- Consolidated alarm panel
- 3rd party integrations
- SLA Reporting
- Network Configuration Backup
- Mobile App

Monitor anything, anytime, anywhere

i-Vertex IT Monitoring is an open, scalable and highly performing platform. Its goal is to provide Users with a tool that goes far beyond the traditional network health and performance monitoring. Thanks to an easy to use GUI, it offers a 360° view on the entire IT environment, allowing to promptly detect anomalies and take corrective actions.

i-Vertex IT Monitoring natively supports over 600 devices, technologies and applications.

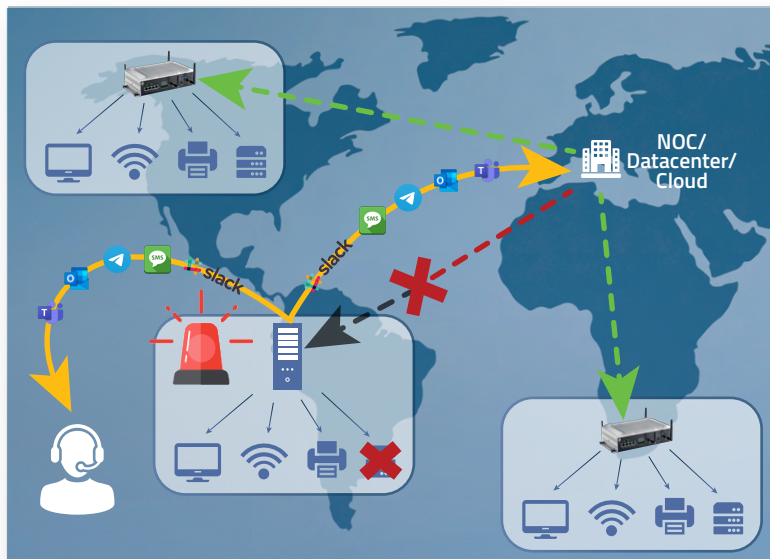
Among others it can monitor:

- Servers
- Network infrastructure devices
- Applications
- Cloud systems
- Operating systems
- Virtual environments, such as VMware, KVM, Hyper-V and Docker
- Databases
- Synthetic User Monitoring
- Cisco IP SLA



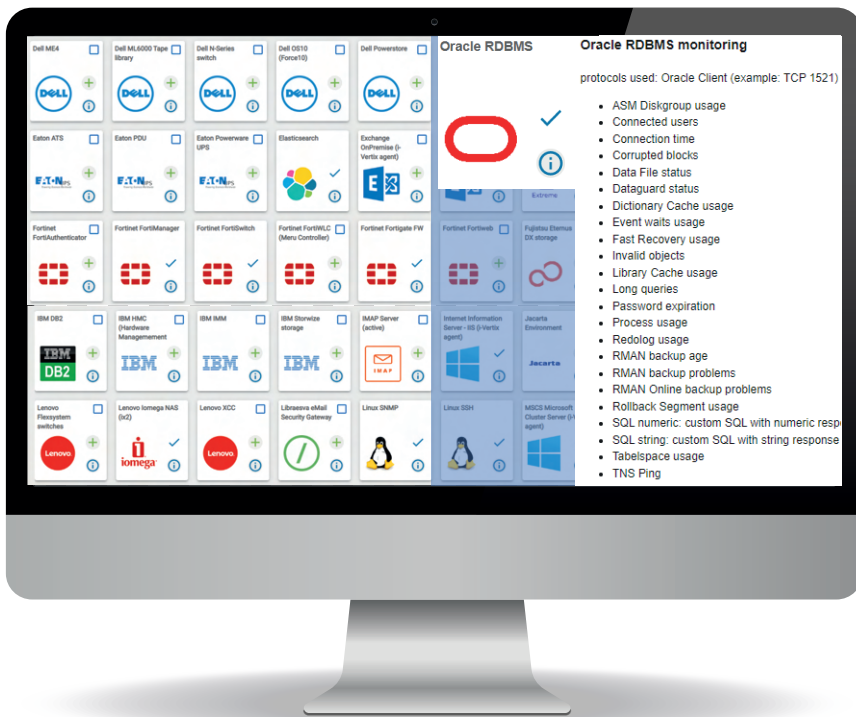
Smart Pollers: receive alerts even when there is no connection

Monitor isolated locations and distributed environments with i-Vertex Smart Pollers, available as both software and hardware appliance (equipped with a 4G module). These components are responsible for collecting monitoring data and sending them to the Central Manager, no matter where they are located.



Even when isolated or disconnected from the Datacenter/NOC, Smart Pollers can still not only poll their networks but they can also send alarm notifications.

This way continuous monitoring activities and managed services delivery are guaranteed.



A Plugin Store where everything comes free of charge

The integrated Plugin Store is an online archive of monitoring profiles that make Plugins selection, download, installation and update extremely easy and fast. Templates based on monitoring best practices and autodiscovery features are also included.

Each Plugin comes with a description of the protocol/technology used to collect data, a detail of what is being monitored and information on applicable discovery modes.

Advanced Monitors

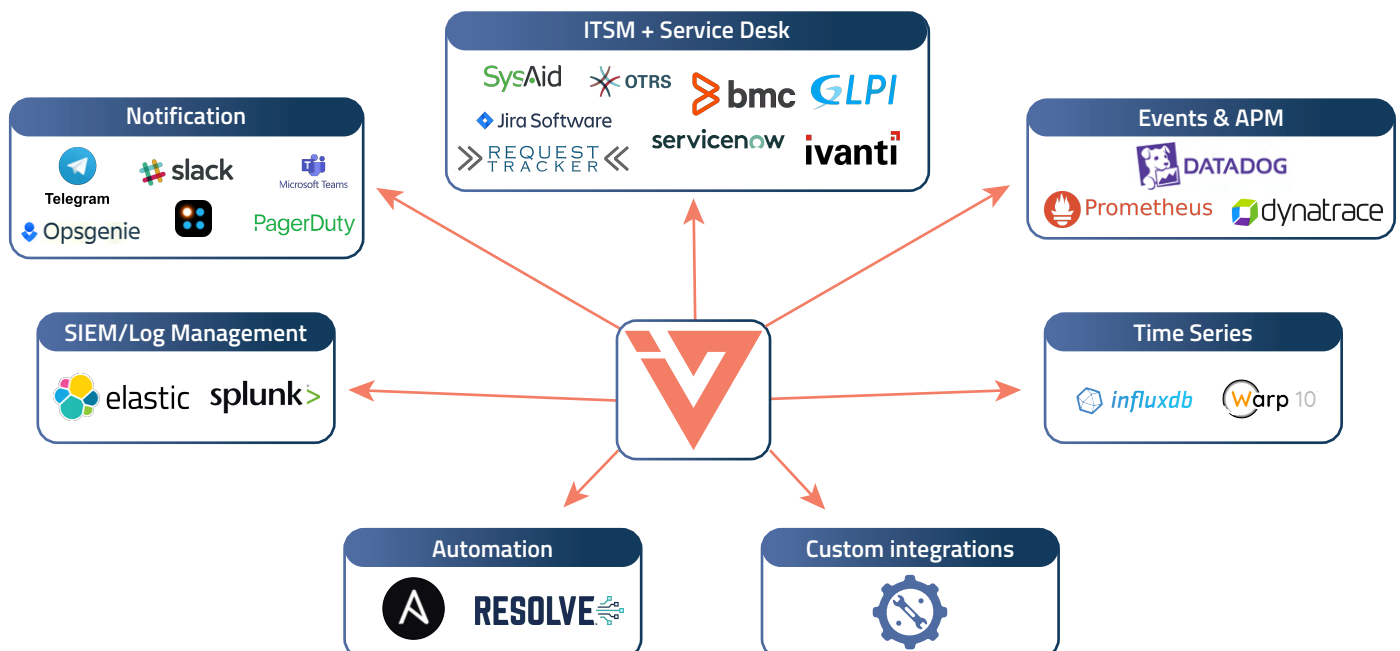
i-Vertex supports multiple monitoring protocols and technologies (SNMP, SSH, WinRM, SQL queries, HTTP requests, APIs, MQTT, Modbus, etc.). Despite it normally works in agentless mode, it can leverage agents when necessary. i-Vertex IT Monitoring comes with 600+ templates that automatically select the right monitoring protocol/technology and apply the proper status parameters and performance metrics checks to any discovered item.

Some examples of Advanced Monitors

- Databases (15+)
- Storages (30+)
- Microsoft ActiveDirectory, Exchange, Cluster Service, IIS
- Linux (SSH/SNMP)
- Office365
- Selenium, SAHI Pro
- Cisco WAAS, ISE, ACI
- BGP and OSPF
- Azure management costs
- AWS billing
- IBM MQ
- SFDC
- Elasticsearch
- Internet bandwidth with speedtest
- HP iLO, Blade chassis
- Google Workspace
- X509's certificate validity
- VMware VeloCloud
- Servers: DHCP, DNS, FTP, NTP, sFTP, TFTP, Radius, etc.
- IBM AS/400
- Kubernetes
- Docker

3rd party solutions integrations

i-Vertex offers several ready to use integrations and is always available to develop new ones.



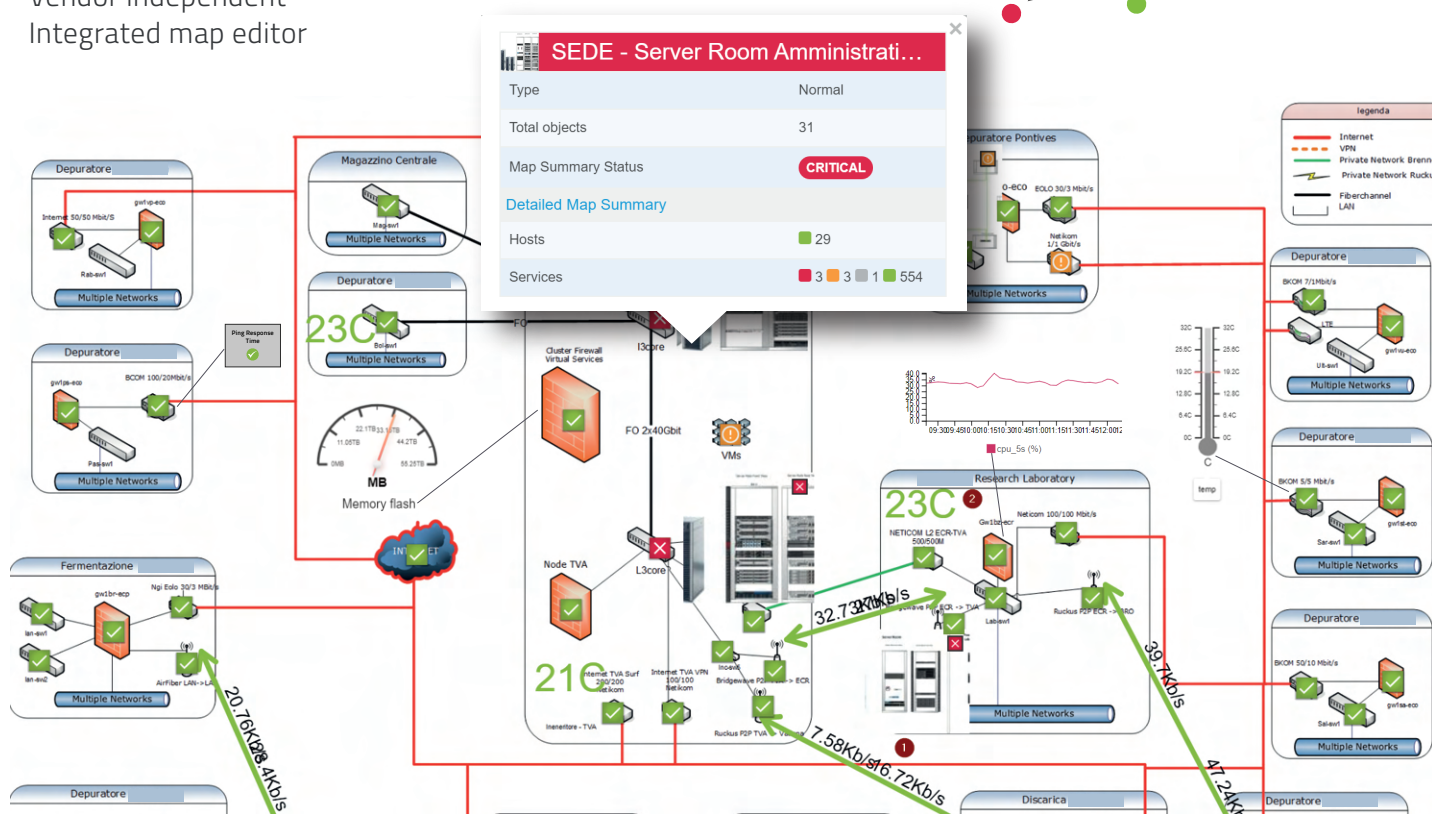
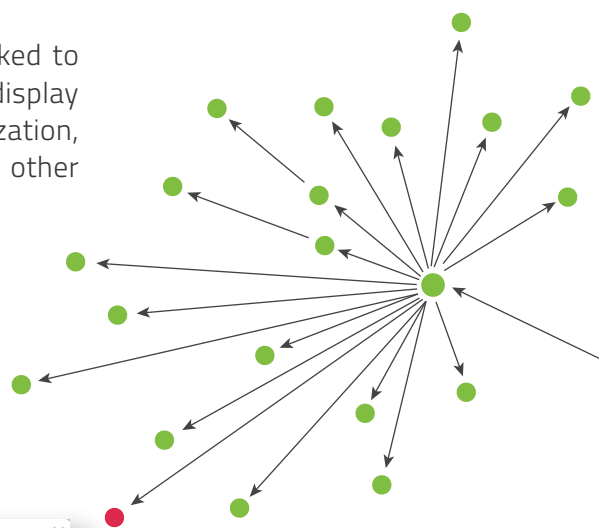
Network Discovery and Mapping

Network Discovery identifies all devices in the network and how they are connected to each other, providing a complete Layer 2 topology map. Scheduled discoveries can track network changes and automatically update the map accordingly. In addition, custom maps are available to visualize the monitored devices into an either static or dynamic geolocalized graphical context.

A multilevel map hierarchy can easily be created and maps can be linked to each other. Maps not only show devices status, but can also graphically display performance indicators (e.g. interface traffic, CPU and memory utilization, temperature, etc.) via multiple widgets, timelines, speedometers and other graphical indicators.

Key features

- Automatic multi-protocol (CDP, LLDP, FDP, etc.) layer 2 Network Discovery and mapping
- Automatic network topology dependency creation
- Scheduled scan with automatic change detection
- Pre-configured rules from i-Vertex Plugin Store
- Vendor independent
- Integrated map editor



Get alerted only when needed

i-Vertex IT Monitoring offers a real-time consolidated scrolling panel that shows multiple event categories: devices or monitor status changes, performance threshold violations, incoming traps, etc. Alerts can be filtered to show only meaningful ones. In addition, multiple types of alert notifications can be generated, leveraging various communication channels, such as SMS, E-mail, Slack, MS Teams, Telegram, etc. Connectors to 3rd party ITSM solutions can be used to automatically open and manage tickets.

Are your applications working as they should?

Through Synthetic User Monitoring i-Vertex measures application performance as perceived by an End User. This is done by simulating User activities, taking application monitoring to the next level. Pre-built scripts that replicate Users' actions (like logging into a web portal, filling out forms and responding to system prompts) are executed to ensure that applications are running smoothly. The feature is available for any type of application and supports the whole web, mobile and windows environments.

SLA Reporting

i-Vertex IT Monitoring automatically calculates SLAs for each host, service, host group or service group, taking several parameters into account (including scheduled downtimes) to accurately and constantly track customers' services and infrastructure availability.

Network Configuration Backup

Version A	Version B
2021-09-27 22:13:17	2020-07-14 09:00:22
Show side by side	
CHANGED	
68 @@ -68,8 +68,6 @@ switch 1 provision ws-c2960s-48lps-1	68 switch 2 provision ws-c2960s-24ps-1
69 !	69 !
70 !	70 !
71 - login on-failure log	
72 - login on-success log	
73 vtp domain	71 vtp domain
74 vtp mode transparent	72 vtp mode transparent
75 !	73 !
178 @@ -178,7 +176,7 @@ interface GigabitEthernet1/0/1	176 switchport mode access
179 !	177 !
180 interface GigabitEthernet1/0/2	178 interface GigabitEthernet1/0/2
181 - description "DPC-231"	179 + description "Spedizione Stampa"
182 switchport access vlan 161	180 switchport access vlan 161
183 switchport mode access	181 switchport mode access
184 !	182 !
203 @@ -203,7 +201,7 @@ interface GigabitEthernet1/0/6	201 switchport mode access
204 !	202 !
205 interface GigabitEthernet1/0/7	203 interface GigabitEthernet1/0/7
206 - description "DPC-232"	204 + description "
207 switchport access vlan 161	205 switchport access vlan 161
208 switchport mode access	206 switchport mode access
209 !	207 !
549 @@ -549,7 +547,6 @@ ip default-gateway 192.168.150.1	
547 ip http server	547 ip http server
550 ip http secure-server	548 ip http secure-server
551 ip sla enable reaction-alerts	549 ip sla enable reaction-alerts
552 - logging 192.168.150.130	
553 snmp-server community <configuration removed>	550 snmp-server community <configuration removed>
554 snmp-server trap link ifetf	551 snmp-server trap link ifetf
555 snmp-server trap timeout 60	552 snmp-server trap timeout 60

This optional fully integrated add-on performs automatic backup of network devices configuration files.

By scheduling periodic collection tasks, multiple configuration versions can be archived, saved in a GIT repository and compared to track and see at a glance any changes.

All main networking equipment Vendors are natively supported.

Super flexible licensing and deployment options

- Licesing is per device but, if requested, i-Vertex IT Monitoring can also be licensed per service/monitor
- Perpetual, subscription, MSP pay-per-use, SaaS Editions are available
- Deployment can be on-prem, in public/private cloud, hybrid, hosted by i-Vertex, cloud SaaS

Product release, OS and DB

i-Vertex IT Monitoring runs on Linux OS and uses MariaDB as Database.

It is released as a ready to use virtual appliance that can be imported in any Hypervisors.

i-Vertex services for MSPs

In order to make NOC Managers' life easier, i-Vertex offers, included in MSP pay-per-use edition:

- Technical support, available via e-mail, phone call and remote desktop sharing session
- New product releases
- Proactive monitoring of i-Vertex solution used by the MSP
- Ordinary platform maintenance (OS and i-Vertex products/monitor profiles updates)

i-Vertex Suite

i-Vertex also offers **Log & Data Management** and **IT Asset Management** solutions. Find more information here.



ABOUT i-VERTEX

i-Vertex is an ambitious and innovative company specialized in IT Management solutions for Enterprises and MSPs. Over 20 years of experience in the field allow us to listen and understand our Partners' and Customers' necessities and provide them with exactly what they need. i-Vertex is your trusted Partner, who stands for simplicity, transparency and reliability.

PGUM Ltd

Vecchia Street 18/C - 39040 Ora (BZ) - Italy
www.i-vertex.com/en/
sales@i-vertex.com

